

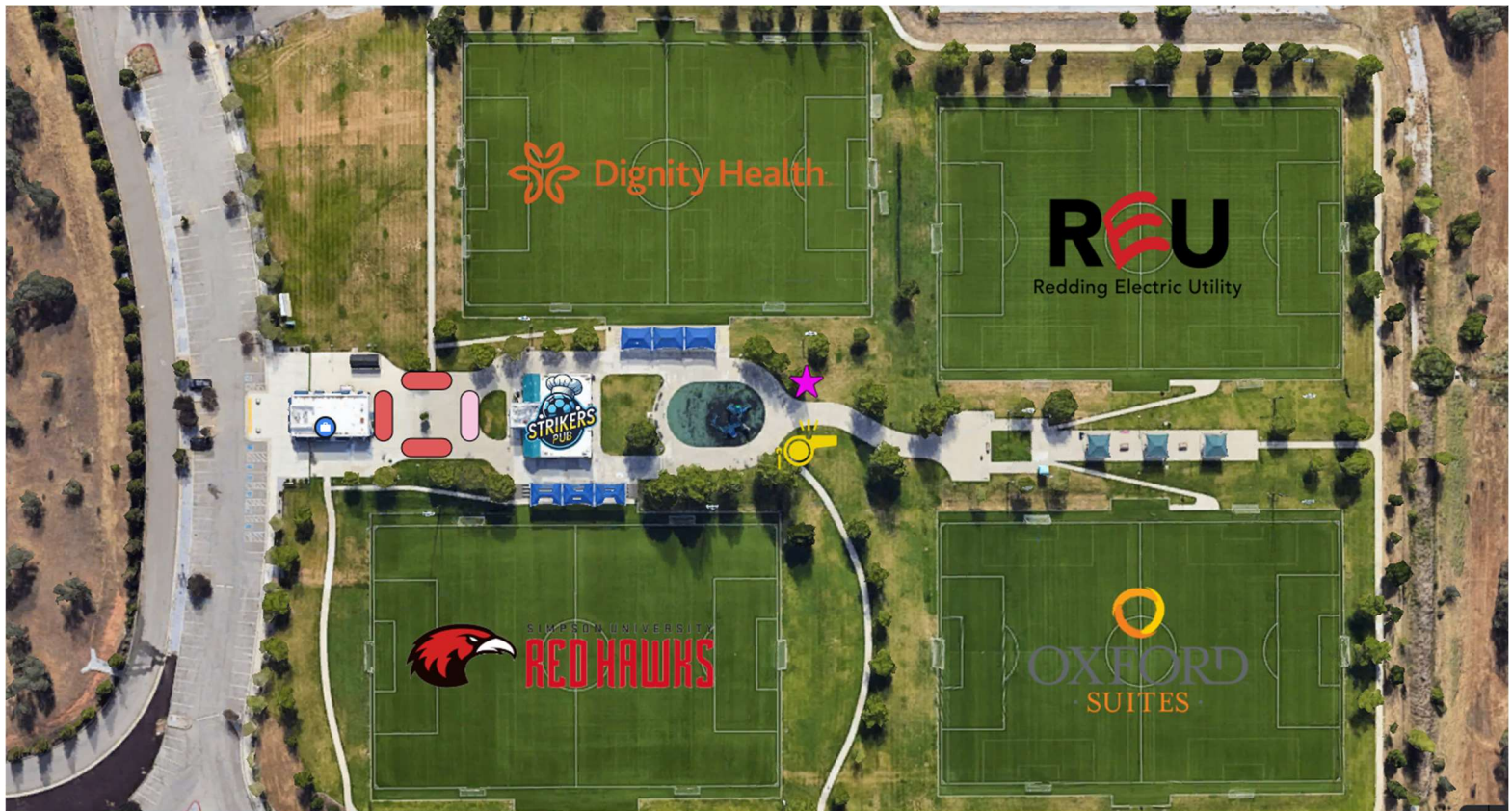


Facilities & Venue Information

The 10th Anniversary SMASH Cup is our biggest event yet, with a record number of teams and games. To accommodate the expanded tournament, we'll be using five venues throughout Redding, with the California Soccer Park serving as the main hub. Each venue offers unique features and amenities, so please review the information below to help you navigate the weekend.

1) **California Soccer Park (Main Venue)**

- i) **Address:** 9800 Old Oregon Trail, Redding, CA 96003
- ii) **Overview:** As the primary venue for the SMASH Cup, California Soccer Park will host the most matches, including the finals for most divisions and Saturday night's Goalie Wars event. The park features four high-quality synthetic turf fields with lights, making it ideal for evening games.
- iii) **Amenities:**
 - (1) Full-service Restaurant on Site – Online Ordering!!!!
 - (2) On-site restrooms
 - (3) Merchandise booth
 - (4) Plenty of seating and shaded areas for spectators
- iv) **Parking:** Large parking lot available, but it can fill up quickly. Overflow parking will be directed to nearby lots.



Vendors/ Award Show Main Quad

Medical Staff

Referee/Team Check In

2) Shasta High School

- i) **Address:** 2500 Eureka Way, Redding, CA 96001
- ii) **Overview:** Located near downtown Redding, Shasta High School offers a quality turf field that will host several group stage matches across multiple divisions. The venue provides a great atmosphere with the beautiful backdrop of the surrounding hills.
- iii) **Amenities:**
 - (1) Restrooms on-site
 - (2) Full bleacher seating
- iv) **Parking:** School parking lots are available, but space may be limited due to other weekend activities. Additional street parking is available nearby.



3) Enterprise High School

- i) **Address:** 3411 Churn Creek Rd, Redding, CA 96002
- ii) **Overview:** Enterprise High School features a Turf field that will host matches for various age groups. The field is conveniently located near main roads and local dining options. Field is in the back of the campus.
- iii) **Amenities:**
 - (1) Restrooms available
 - (2) Nearby restaurants and cafes for meals between games
 - (3) Full Stadium Seating
- iv) **Parking:** Plenty of parking in the main school lot. Use the North side entrance for closest access to the field.



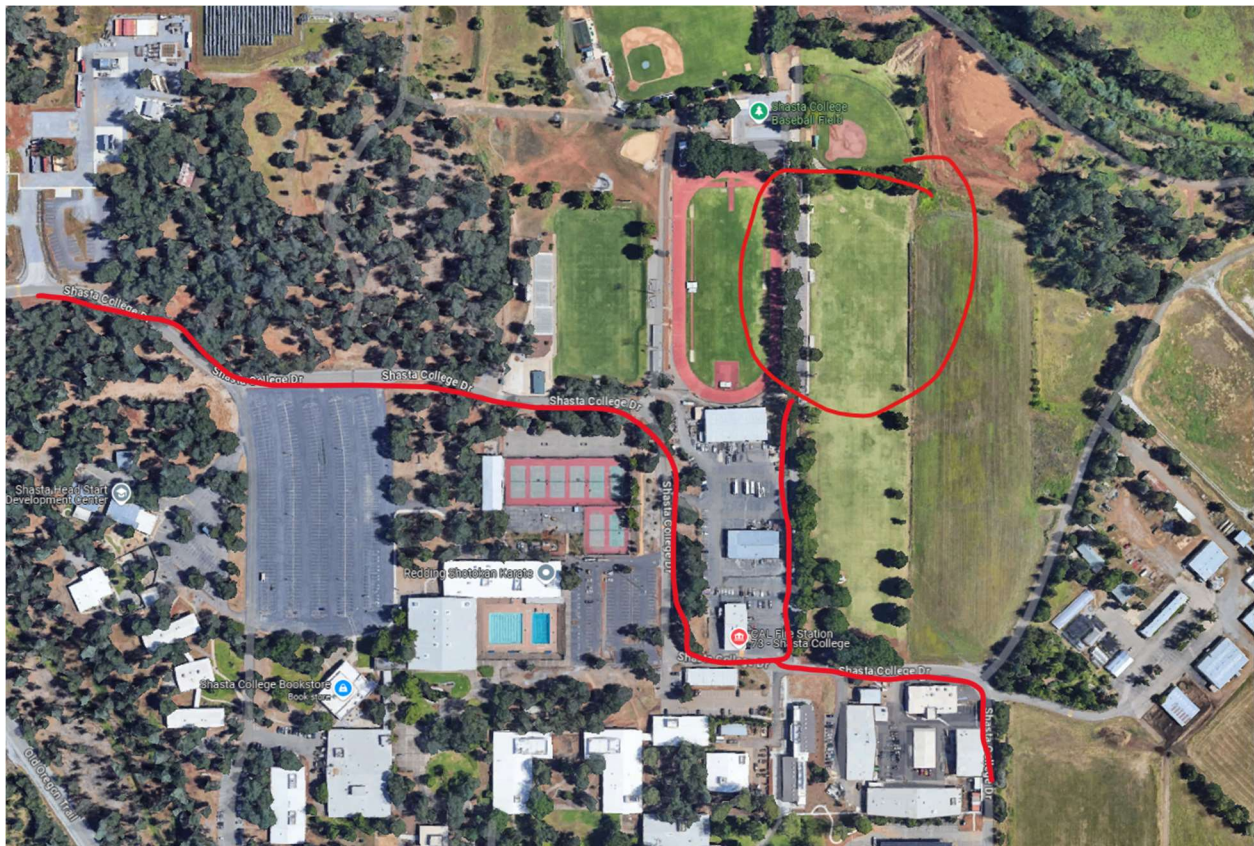
4) **University Preparatory School**

- i) **Address:** 2200 Eureka Way, Redding, CA 96001
- ii) **Overview:** U-Prep's field is located near Shasta High School, making it easy to move between the two venues if needed. The turf field is in good condition and will host various age divisions throughout the weekend.
- iii) **Amenities:**
 - (1) Portable Restrooms on-site
 - (2) Nearby food options, including a few within walking distance
 - (3) Bleacher seating.
- iv) **Parking:** Shared with Shasta High School, with additional street parking nearby.



5) Shasta College

- i) **Address:** 11555 Old Oregon Trail, Redding, CA 96003
- ii) **Overview:** Located near the California Soccer Park, Shasta College provides quality grass field. It's an ideal secondary venue for teams playing multiple games in one day.
- iii) **Amenities:**
 - (1) Portable Restrooms available on campus
 - (2) Large open space for warm-ups and team gatherings
 - (3) Limited Bleacher Seating, recommended to bring a folding chair
- iv) **Parking:** Large parking lot available, with plenty of space for cars and team buses.



6) General Venue Guidelines

- i) **Field Etiquette:** Please respect all facilities. No littering, and be mindful of keeping the fields clean. Teams should set up and clean up their areas after games.
 - ii) **Arrival Times:** Plan to arrive at least 45 minutes before your game to allow time for check-in, parking, and warm-ups.
 - iii) **Field Maps:** Detailed maps showing field layouts at each facility are included in the packet. Use these maps to locate specific field numbers and game locations.
- b) **Transportation Between Venues**
- i) **Driving Time:** The venues are spread out, with the farthest distance being about a 20-minute drive. Be sure to check your schedule for potential back-to-back games at different sites and plan accordingly